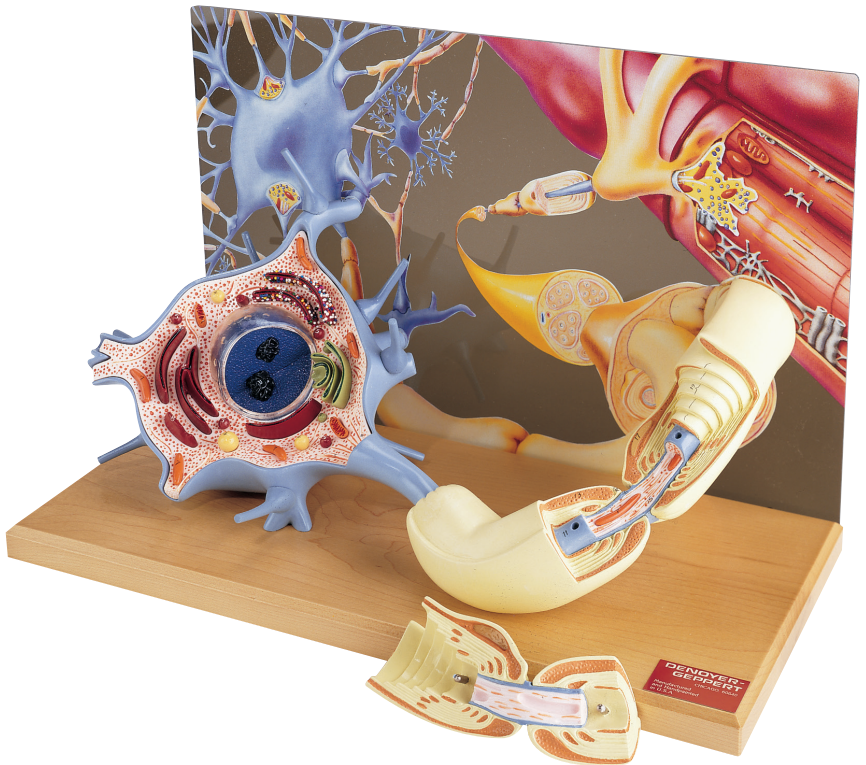


Motor Neuron Diorama

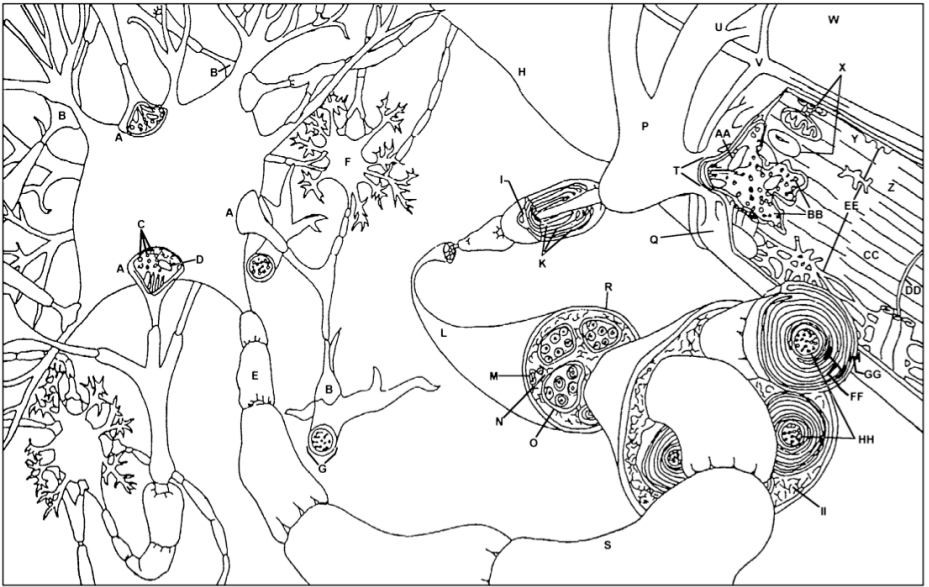
Numerical Identification Key for Model 0167-00



denoyer.com

Presentation of the Model

1. Nucleus
2. Nucleolus
3. Cytoplasm
4. Lysosome
5. Vesicles (*emerge from Golgi & ER*)
6. Golgi apparatus of Golgi complex
7. Mitochondria
8. Endoplasmic reticulum (*ER*) Nissl body
(*rough ER has polyribosomes on it*)
9. Nerve fibers
10. Axon hillock (*cone-shaped base of axon*)
11. Axon
12. Dendrite
13. Schwann cell cytoplasm
14. Node of Ranvier
15. Cytoplasm of axon (*axoplasm*) includes:
neurofilaments, microtubules, vesicles and
mitochondria
16. Axolemma
17. Schwann cell nucleus
18. Schmidt-Lanterman cleft
19. Myelin sheath (*wrapping portion with no
cytoplasm*)



- | | |
|--|--|
| A. Axosomatic synapse | T. Neurofibrils (<i>neurofilaments, microtubules</i>) |
| B. Axodendritic synapse | U. Axon terminal (<i>synaptic end bulbs, neuromuscular junction, motor endplate, boutons, terminal branches</i>) |
| C. Synaptic vesicles | V. Capillary |
| D. Mitochondrion | W. Nucleus of muscle fiber |
| E. Nucleus of Schwann cell | X. Mitochondria of muscle fiber |
| F. Cell body (<i>soma and/or perikaryon</i>) | Y. A-band |
| G. Cytoplasm of dendrite | Z. Myofibril |
| H. Nucleus of muscle fiber | AA. Mitochondria |
| I. Nucleus | BB. Synaptic vesicles |
| J. Axon | CC. Z-band line |
| K. Paranodal loops | DD. I-band |
| L. Nerve | EE. Sarcoplasmic reticulum |
| M. Vein | FF. Myelin sheath (<i>no cytoplasm</i>) |
| N. Artery | GG. Neurilemma (<i>includes cytoplasm</i>) |
| O. Perineurium | HH. Axolemma |
| P. Terminal Schwann cell | II. Endoneurium |
| Q. Sarcolemma (<i>cover</i>) | |
| R. Epineurium | |
| S. Schwann cell | |



Autographed Anatomy

Molded and hand-painted in the United States by experienced artisans. Proudly autographed and dated to show that we stand by our products. The Autographed Anatomy™ product line carries a Lifetime Guarantee against manufacturing defects.

Care of Denoyer-Geppert Models

Your Denoyer-Geppert model was designed and manufactured to provide years of satisfactory service. Our models are molded of durable vinyl plastic. The finest lacquers and inks are used in the hand-painting and numbering of all our models.

In order to clean the model, you should wipe it with a damp cloth, or a cloth wet with mild soap solution, and wipe dry.

Avoid placing the model in direct sunlight for extended periods. A cloth cover or case will help keep the model clean.

Plastic covers not recommended